

KATE REED TRAILS

MOUNTAIN BIKE TRAILS

EASY

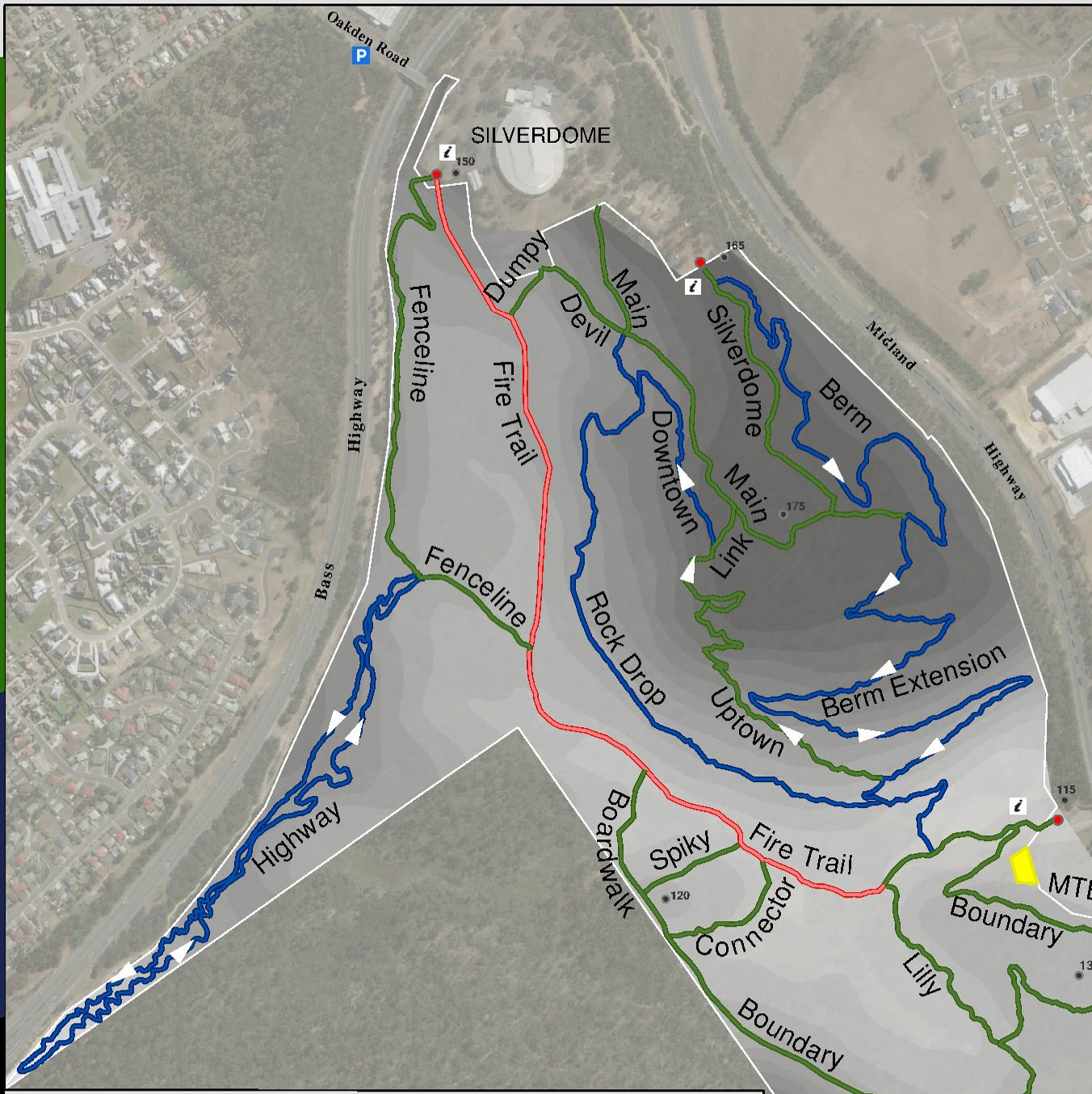
- BOARDWALK**
Green | 0.4km
- BOUNDARY**
Green | 1.5km
- CONNECTOR**
Green | 0.2km
- DEVIL**
Green | 0.2km
- DUMPY**
Green | 0.1km
- FENCELINE**
Green | 0.9km
- LILLY**
Green | 0.4km
- LINK**
Green | 0.1km
- MAIN**
Green | 0.7km
- UPTOWN**
Green | 0.8km
- SILVERDOME**
Green | 0.6km
- SPIKY**
Green | 0.2km

INTERMEDIATE

- BERM**
Blue | 1.0km
- BERM EXTENSION**
Blue | 1.8km
- DOWNTOWN**
Blue | 0.4km
- HIGHWAY**
Blue | 2.5km
- ROCK DROP**
Blue | 1.1km

ADVANCED

- BLACK DIAMOND LOOP**
Black | 0.3km



UNLESS NOTED ALL TRAILS WITHIN RESERVE ARE SHARED USE
PEDESTRIANS HAVE RIGHT OF WAY OVER MOUNTAIN BIKERS
STAY ON DESIGNATED TRAILS ON DURABLE SURFACES

- Do not widen trails and avoid riding muddy trails
- Please comply with all signage
- Stay within reserve boundary limits
- For further information on tenure and animal restrictions please refer to the Kate Reed Nature Recreation Area map

REPORT UNAUTHORISED ACTIVITIES OR ISSUES TO RANGERS ON
1300 827 727
(1300 TASPARKS)

- P** Parking
- i** Information Sign
- ▲** Single Direction Trail
- Trail Head
- 115 Elevation Marker (m ASL)
- Contour (5m Interval)

FOR TRAIL CONDITIONS REFER TO
www.launcestonmountainbikeclub.com
or www.trailforks.com



Launceston Mountain Bike Club acknowledges and pays respect to Tasmanian Aboriginal people as the traditional and original owners, and continuing custodians of this land and acknowledges Elders - past, present and emerging.

Credits: Base data supplied by Tasmanian Parks & Wildlife Services. Contour data supplied from theLIST Open Data © State of Tasmania. Background Image Source: Esri, DigitalGlobe, GeoEye, Earthstar Geographics, CNES/Airbus DS, USDA, USGS, AeroGRID, IGN, and the GIS User Community